

Humidor Storage Project – SUPPORT

To whom it may concern,

The Clean Coalition (clean-coalition.org), a technical nonprofit organization with a mission to accelerate the transition to renewable energy and a modern grid, is supporting the Los Angeles County Board of Supervisors approval of a franchise agreement that will allow for the approved Humidor Battery Energy Storage System (BESS) to connect to the grid at the existing Vincent Substation with an approximately one-mile, undergrounded electrical line. This 400-megawatt (MW) & 1,200-megawatt-hour (MWh) BESS has an approved site plan review and will be located on disturbed land near the existing Vincent Substation in Acton, California. The connection of Humidor to the grid is key to maximizing renewable energy generation, reducing grid congestion, and improving grid reliability throughout Los Angeles County – and even across the entire State of California. The Vincent Substation serves as a vital intersection of transmission & distribution lines that tie renewable energy from the Central Valley to loads throughout Los Angeles County. As noted, the County has already approved the BESS itself. All that remains is for the Board of Supervisors

to allow the gen-tie line to be installed in an existing utility corridor in a public street.

Humidor will be an essential enhancement to the Vincent Substation by reducing congestion at this vital location on the grid, while maximizing the ability for renewable energy to be delivered to loads – and thereby minimizing the curtailment (i.e., waste) of renewable energy. Humidor will also minimize the need for dirty gas-fired plants to operate, including during periods of peak electricity demand, which will prevent pollution that would otherwise spew into impact-

ed communities across the Los Angeles region.

Proven BESS technology will be incorporated in Humidor, and large buffer zones and comprehensive safety plans will ensure community-friendly operations. Furthermore, the substantial investment in Humidor will drive significant economic stimulation in the form of local job creation, tax revenue generation, and indirect spending. Additionally, \$100,000 per year has been committed to community initiatives. In short, Humidor aligns with California’s commitment to resilience, sustainability, and prosperity.

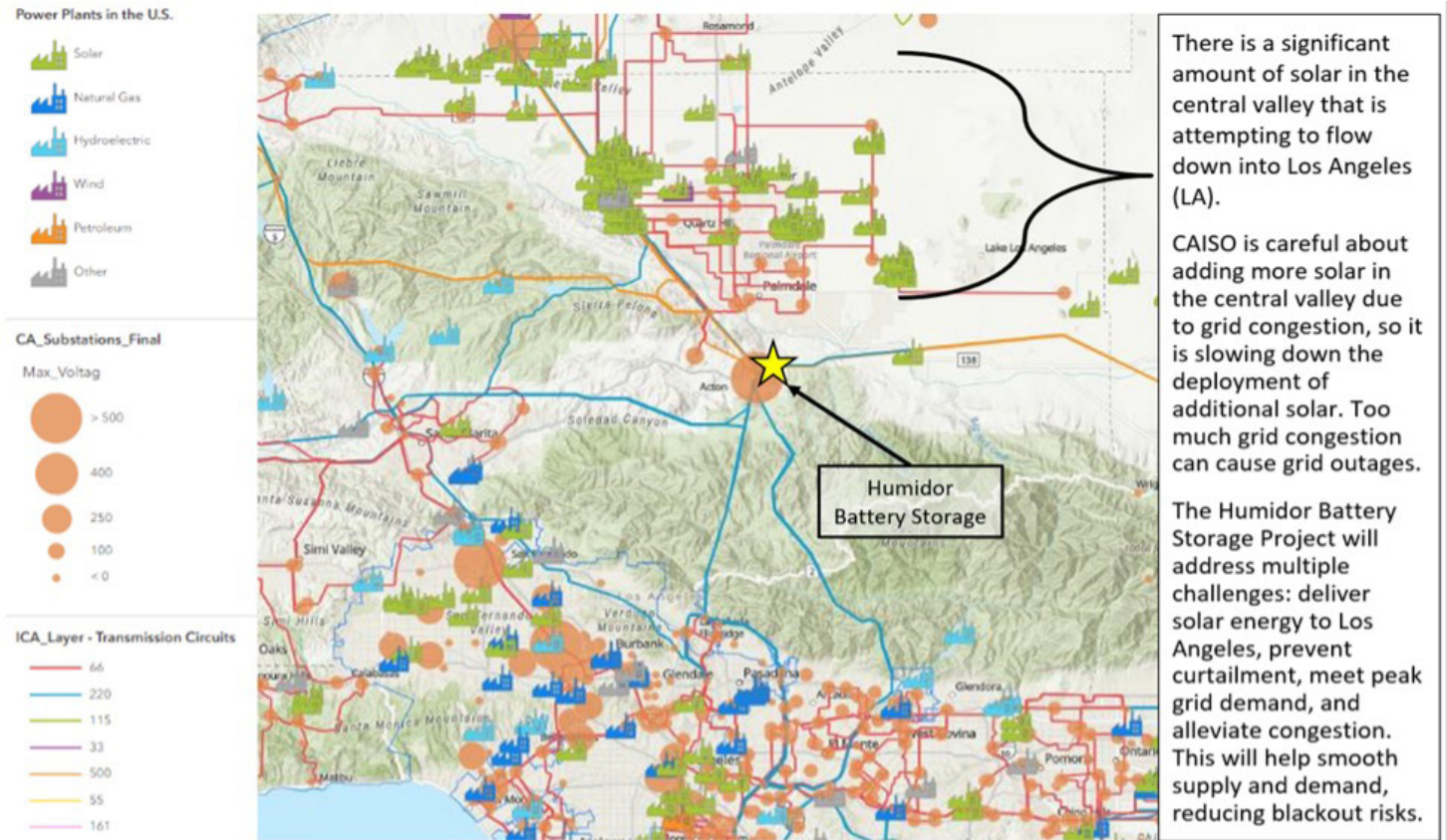
There are five key reasons to support the franchise agreement for Humidor:

1. Critical location near the existing Vincent Substation to enhance renewable energy delivery, grid reliability, and resilience.
2. Community-friendly deployment, sited on disturbed land in an industrial zone and already approved by the County, with significant distances to the Acton town center.
3. Safe BESS technology that is already proven throughout the United States and beyond.
4. Significant economic stimulation to the region.
5. Targeted benefits for the Acton community.

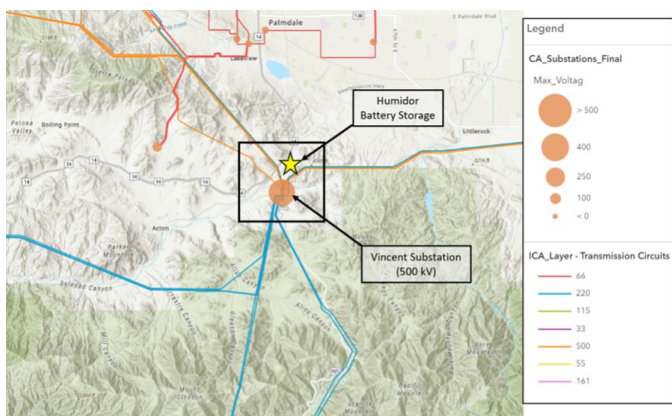
Important location to provide reliability and meet energy demand

■ Reduce grid congestion by storing solar energy and other renewables from the Central Valley that would otherwise be curtailed during times of grid congestion and delivering it to loads in the Los Angeles region, thereby preventing gas-fired generation that otherwise pollutes impacted communities.

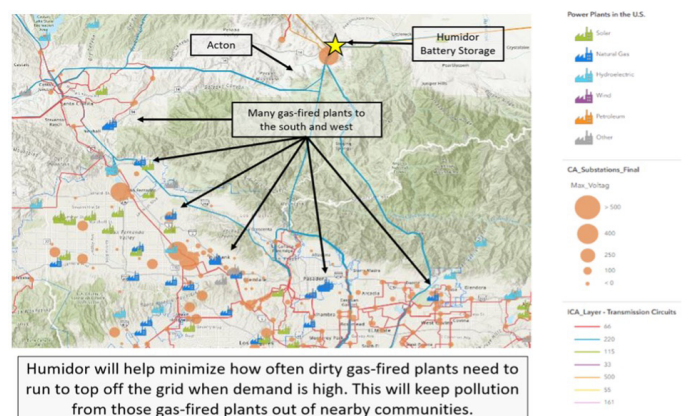
■ Improve reliability system-wide during the hottest hours of the year and decrease the runtime of dirty gas-fired plants.



Humidor is in the perfect location to reduce grid congestion and improve reliability



Humidor is located at a major grid intersection



Humidor will keep pollution from nearby gas-fired plants out of nearby communities

Significant distances from other facilities, including housing

In its approved location, Humidor will:

■ Use already disturbed industrial land recently used for commercial trucking and as an electrical subcontractor yard.

■ Be buffered by roadways, rail lines, and industrial facilities.

■ Be visually screened by local, native vegetation and well-secured by a 8-foot-high perimeter wall and internal security fence.



FAR AWAY FROM RESIDENTIAL NEIGHBORHOODS



ADJACENT TO GRID INFRASTRUCTURE



AN INDUSTRIAL AREA BETWEEN A FREEWAY AND RAIL LINE



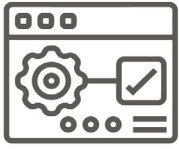
FAR AWAY FROM RESIDENTIAL NEIGHBORHOODS

Humidor's approved location is on already disturbed industrial land buffered by industrial infrastructure



A rendering of the approved Humidor BESS with attractive natural screening

Same safe BESS technology that is already deployed across the United States



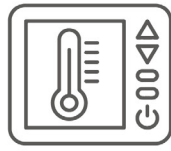
24/7
MONITORING



EXTERNAL FIRE
ALARM CONTROL
PANELS



SMOKE AND GAS
DETECTION
SYSTEMS



VENTILATION +
TEMPERATURE
CONTROL
SYSTEMS

BATTERY STORAGE TECHNOLOGY HAS RAPIDLY ADVANCED

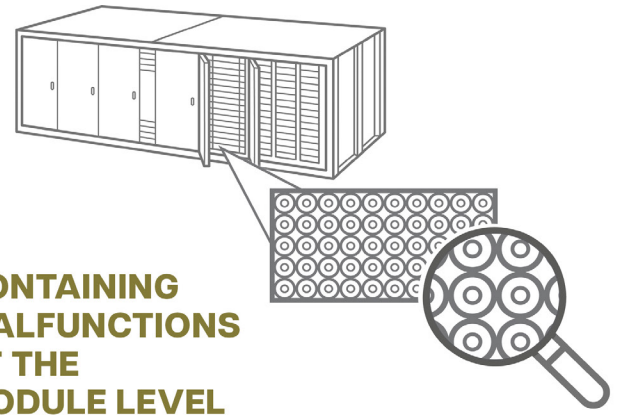
A MODERN, TESTED AND PROVEN APPROACH TO FIRE SAFETY

■ Hecate Grid is working with the LA County Fire Department to exceed code requirements at Humidor and develop a site-specific emergency response plan to train on the project equipment.

■ A joint study* by the Electric Power Research Institute, the Pacific Northwest National Laboratory, and TWAICE, determined that problems with system components other than battery cells and modules were responsible for most BESS failures. That the "common storyline... that failures are almost all attributable to battery modules" is inaccurate. *<https://www.epri.com/research/products/000000003002030360>

■ Hazard studies* from similar battery projects concluded that the probability is very low that a battery failure would ever require a Fire Department response. It was also determined that any conceivable fire-related event would be of similar concern as a Class A Fire, which is a fire involving ordinary combustibles such as wood, paper, fabric, and plastic. *<https://drive.google.com/file/d/1iDpar4MLq6ecinXIURFKM-KdSeaP-Zog/view?usp=sharing>

■ Other hazard studies* revealed that risks from any potential exhaust from a battery issue would be of little concern beyond 15 feet from the source battery cabinet, in part due to the simple fact that warm exhaust quickly rises and scatters. *<https://drive.google.com/file/d/1i4WxNY0DVxXDd6b2y11C42w8pEKR8PAE/view?usp=sharing>



CONTAINING MALFUNCTIONS AT THE MODULE LEVEL

TECHNOLOGY CAN COMPARTMENTALIZE, DETECT AND SUPPRESS, MITIGATING ANY SPREAD OF CELL FAILURES. BMS CAN DISCONNECT INDIVIDUAL MODULES AS NEEDED TO ISOLATE AN ISSUE.



MEET OR EXCEED ALL LOCAL
AND STATE FIRE CODES



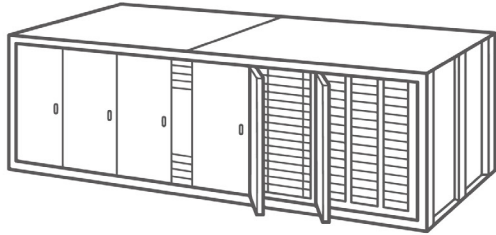
SITE-SPECIFIC
ANNUAL TRAINING

EMERGENCY PLANNING + LOCAL COORDINATION

COLLABORATE WITH LOCAL EMERGENCY RESPONDERS THROUGH TRAINING AND EDUCATION TO DEVELOP A COMPREHENSIVE EMERGENCY RESPONSE PLAN.



Same safe BESS technology that is already deployed across the United States



SECURE AND CONTAINED ENCLOSURES

PROPERLY MAINTAINED AND UTILIZED BATTERY STORAGE SYSTEMS ARE NOT A THREAT TO THE ENVIRONMENT, OR GROUNDWATER.



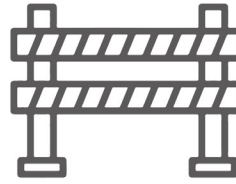
DECOMMISSIONING

WHEN THE PROJECT REACHES THE END OF ITS USEFUL LIFE, IT WILL BE DECOMMISSIONED, AND ALL THE COMPONENTS WILL BE CLEARED AND PROPERLY RECYCLED OR DISPOSED OF WITHOUT COST TO LOCAL.

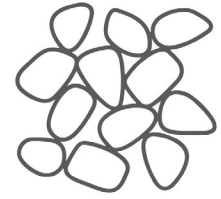


READILY AVAILABLE WATER SUPPRESSION TOOLS

DESIGN AND INSTALL FIRE HYDRANT NETWORK TO BE USED TO CONTAIN AND COOL BATTERY ENCLOSURES TO AVOID AND OR MITIGATE AGAINST ANY ISSUES.



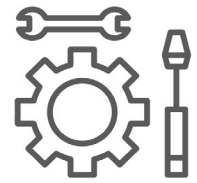
SAFETY ZONE AROUND THE PERIMETER OF THE FACILITY



GRAVEL BREAKS AND MASONRY WALL



SUBSTANTIAL SETBACKS FROM PARCEL BOUNDARIES



REGULAR MAINTENANCE



SEISMICALLY BRACED AND PROTECTED



THE PROJECT WILL NOT USE GROUNDWATER AND WILL SOLELY USE LA COUNTY PUBLIC WORKS WATER

ADDITIONAL PHYSICAL SAFETY DESIGN FEATURES

ENHANCEMENTS TO ADDRESS FIRE RISKS



Respect for environmental & cultural resources

The site will use LA County public water from District 37; water connections already exist.

Humidor has no impact on sensitive biological areas or species.

Humidor has no impact on cultural resources or artifacts.

Significant economic benefits to the local community



Will create approximately 100 union construction jobs.



Will employ 2 to 4 maintenance staff in addition to a 24/7 remote operations team.



Approximately \$2,000,000/year in annual tax benefits to LA County.



\$100,000 per year for community initiatives.

Humidor aligns perfectly with California’s commitment to resilience, sustainability, and prosperity – and I hope you will join the Clean Coalition in allowing this approved project to connect to the Grid by the approval of a franchise agreement.

Thank you for your consideration.

Sincerely,

**Craig
Lewis**
Founder &
Executive
Director
Clean Coalition

**Jonathan
Port**
Founder
Permacity Foun-
dation

**Merrian
Borgeson**
Policy Director,
California,
Climate &
Energy
Natural
Resources
Defense Council
(NRDC)

**Jonathan
Parfrey**
Executive
Director
Climate Resolve

**Richard
Burke**
Leader
Elders Climate
Action SoCal
and NorCal